



Bramble Road, Ellenbrook, Hatfield, AL10



The Property

A beautifully presented, bay fronted three bedroom semi-detached house with a stunning mature over 100ft rear garden, situated in a highly sought-after, quiet location in Ellenbrook towards the western fringes of Hatfield, within a short drive of St Albans.

This wonderful family home has been extended to the ground floor and offers further scope to enlarge, subject to the necessary consents. Spaciously arranged over two levels the property offers a welcoming hallway, double length living room, a large open-plan kitchen/dining room, ground floor shower room, three double bedrooms and a well-appointed bathroom. To the rear is a magnificent mature garden extended to over 100ft. The front provides off-street parking and to the side there is a garage.

The property is located on the western fringes of Hatfield, close to the historic City of St Albans City. There are also excellent transport facilities such as the A1M, M1 and M25 within easy reach.

Guide price £689,950





Key Features

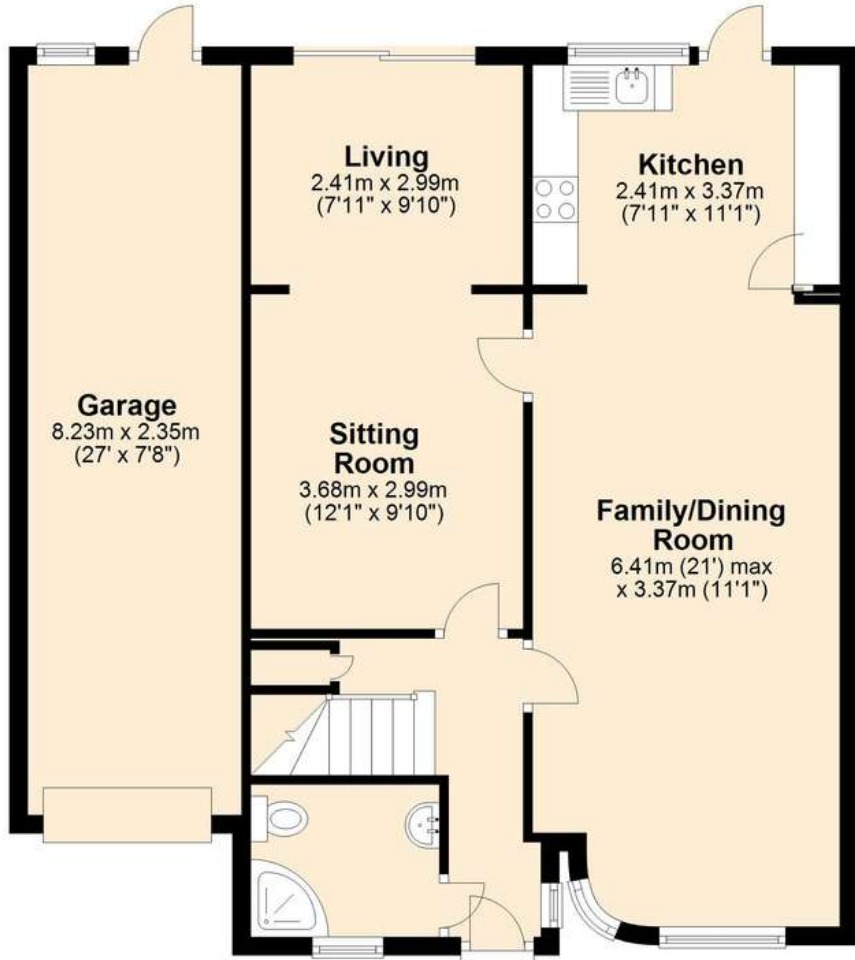
- Highly Sought-After Location
- Western Fringes (Ellenbrook) Of Hatfield
- Within Easy Reach Of St Albans
- Extended To The Ground Floor
- Large Reception Room
- Spacious Kitchen/Dining Room
- Three Double Bedrooms
- Bathroom Plus Ground Floor Shower Room
- Large Mature Garden (over 100ft)
- Parking Plus Garage
- Close To Excellent Transportation Links





Ground Floor

Approx. 80.7 sq. metres (869.1 sq. feet)



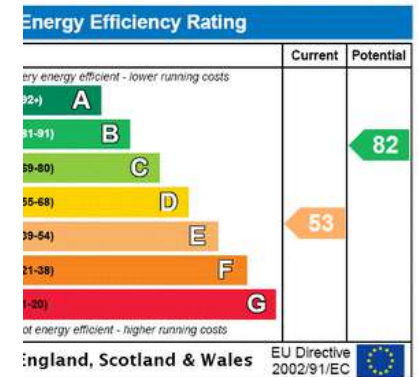
First Floor

Approx. 39.3 sq. metres (423.2 sq. feet)



Total area: approx. 120.1 sq. metres (1292.3 sq. feet)

Total SQFT including the GARAGE



created by Fullbrook & Floor Estate Agents

Plan produced using PlanUp

Disclaimer:

Every attempt has been made to ensure accuracy; however, these property particulars are approximate and for illustrative purposes only. They have been prepared in good faith and they are not intended to constitute part of an offer of contract. We have not carried out a structural survey and the services, appliances and specific fittings have not been tested. All photographs, measurements, floor plans and distances referred to are given as a guide only and should not be relied upon for the purchase of any fixture or fittings. Lease details, service charges and ground rent (where applicable) are given as a guide only and should be checked prior to agreeing a sale.

4-A Canberra House, London Road 01727 251 691
St. Albans, AL1 1LE info@fullbrookandfloor.co.uk
www.fullbrookandfloor.co.uk

